

Appendix A SNMP-SSL Upgrade Utility Software

General information

To be able to perform firmware upgrading, SNMP-SSL card must be connected to the same network as the workstation from which the file is to be sent. In the SNMP-SSL Control menu, check that the Network Upgrade is enabled and that you have the login string information and the Community Read/Write Password.

Updating the SNMP-SSL card's Firmware from Windows

To perform firmware upgrade, use the SNMP-SSL Upgrade Utility program on the SNMP-SSL CD-ROM. This program is compatible with Windows95/98/Me, Windows NT 3.51/4.0/2000/XP/2003 and higher.

1. Select **Discover** to find the SNMP-SSL cards on the local network.
 2. Select an individual or select multiple SNMP-SSL cards to upgrade.
 3. Select **Modify** and enter the User name and the Password.
 4. Select **Open** to find and load the new firmware file (.BIN).
 5. Select **Upgrade** to send the firmware file to the selected SNMP-SSL cards.
 6. This completes the upgrade procedure.
- a. **UPS List:** Displays the addresses of the SNMP-SSL cards present in the local network.
 - b. **Discover:** Search for the SNMP-SSL cards on the local network.
 - c. **Remove:** Removes the selected SNMP-SSL cards from the UPS List.
 - d. **Modify:** Lets you modify the parameters of the SNMP-SSL cards selected in the UPS List.
 - e. **Add:** Lets you add the IP address of the SNMP-SSL cards to the UPS List manually.
 - f. **Browse:** Open SNMP-SSL card's Web page of the SNMP-SSL card selected in the UPS List.
 - g. **Upgrade:** Sends the program to the selected SNMP-SSL card of the UPS List.
 - h. **Open:** Opens and loads the new firmware file (.BIN) for upgrading.
 - i. **Quit:** Exits the program.

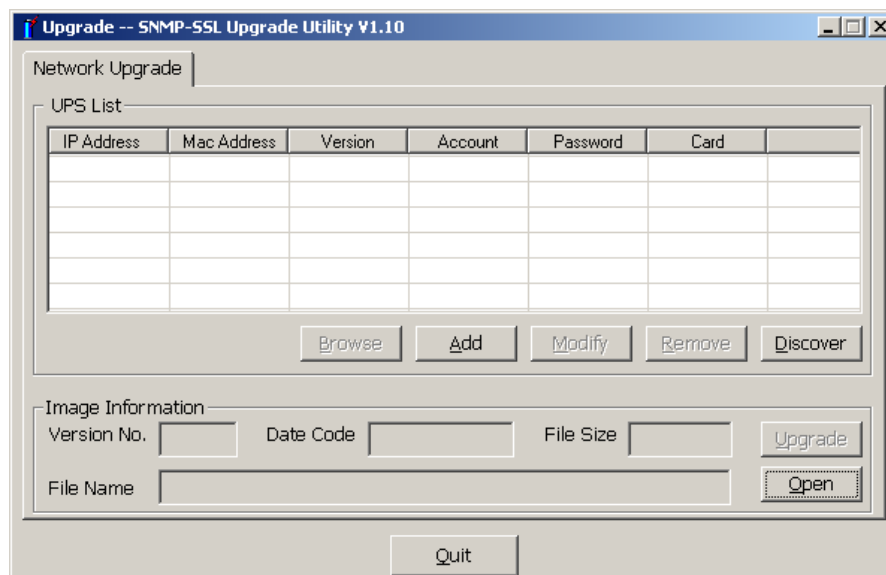


Figure A-1 SNMP-SSL Upgrade Utility.