

# **RPM Utility Software**

## **User's Manual**

## Table of Contents

1. Introduction.....	1
2. Installation .....	2
3. RPM Utility Interface.....	4

# 1. Introduction

## General

RPM Utility program is an RPM monitoring, and management software. It has been designed to provide information about the power conditions and the status of RPM and the power environment.

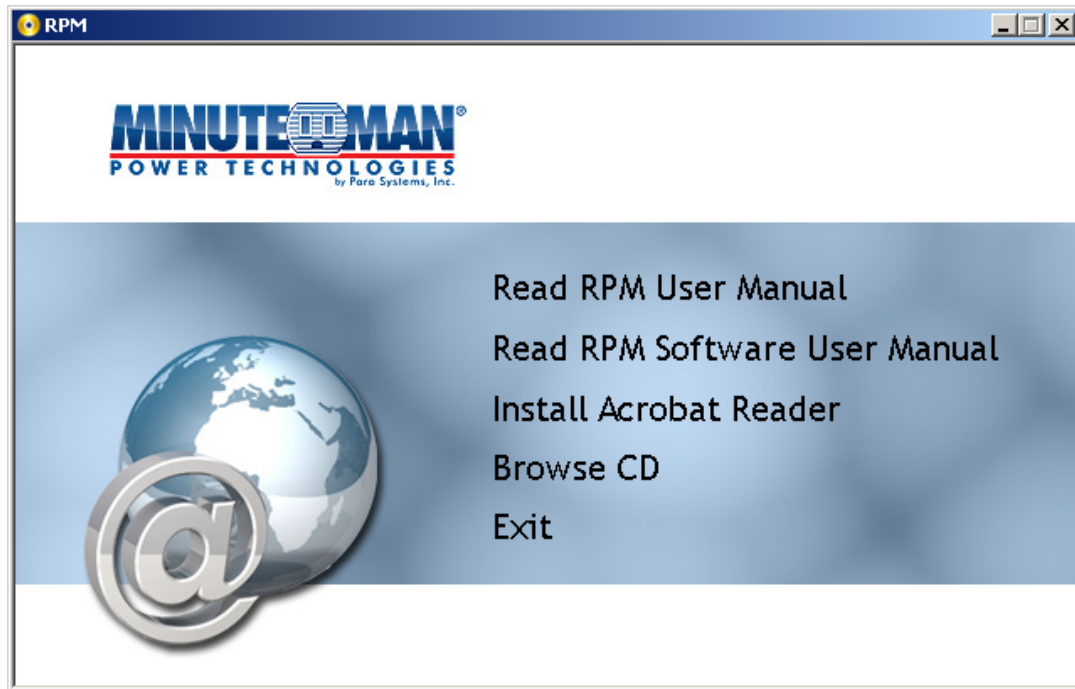
Its functions include:

1. Monitor a large amount of RPMs simultaneously.
2. Group Management of a large amount of RPMs.
3. Send emails and traps to the specified accounts when a power event occurs.
4. Events can be logged and exported to a Syslog server.

## 2. Installation

### Install procedure:

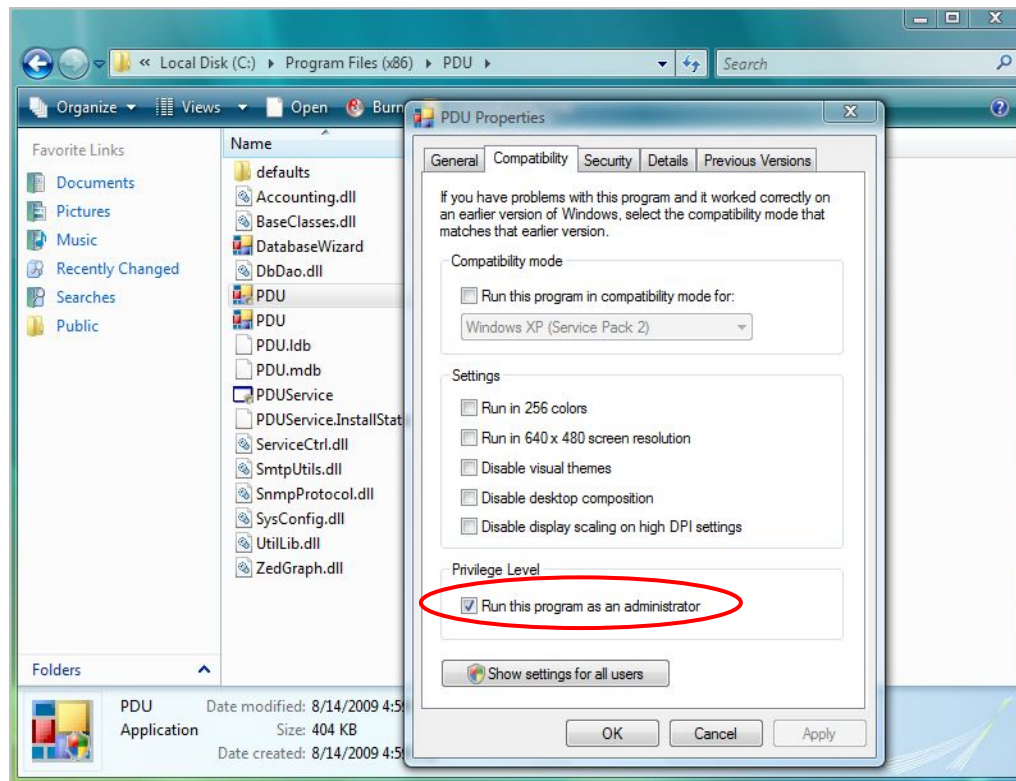
The CD's auto play screen. Easy to follow step by step instructions.



### Note:

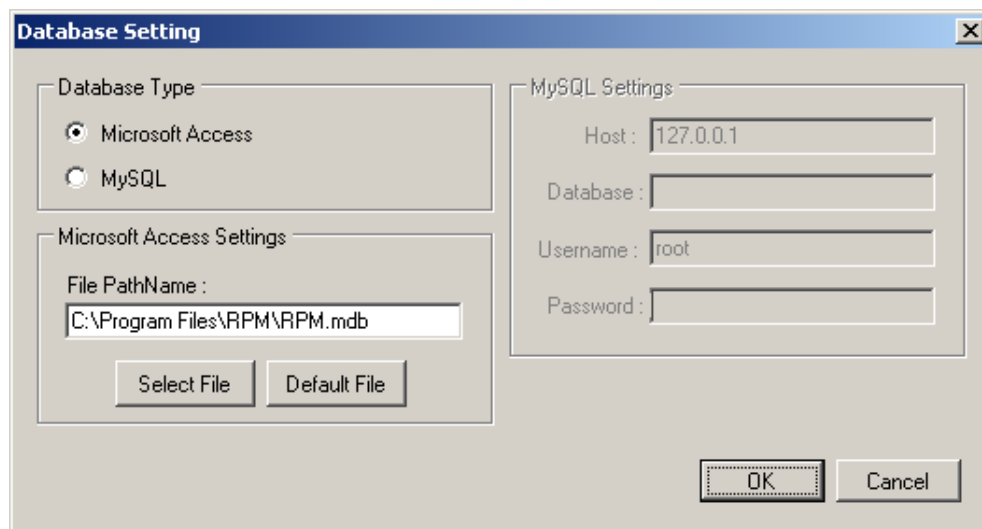
1. It will take several minutes if your operating system does not have Microsoft .NET Framework installed.
2. It is recommend that the RPM Utility progrm be installed at the server level of Windows operating system.
3. If the RPM Utility program is installed in Windows Vista and/or Win 7, you must first go to the folder of RPM and select the Properties of "RPM.exe", to check the "Run this program as an administrator". Then the utility will operate properly.





First time using the RPM software, you must select which kind of database that you want to use to record the RPM information.

- The default database is Microsoft Access.
- If you want to use MySQL database, you may need to download it from <http://www.mysql.org>



### 3. RPM Utility Interface

#### Start

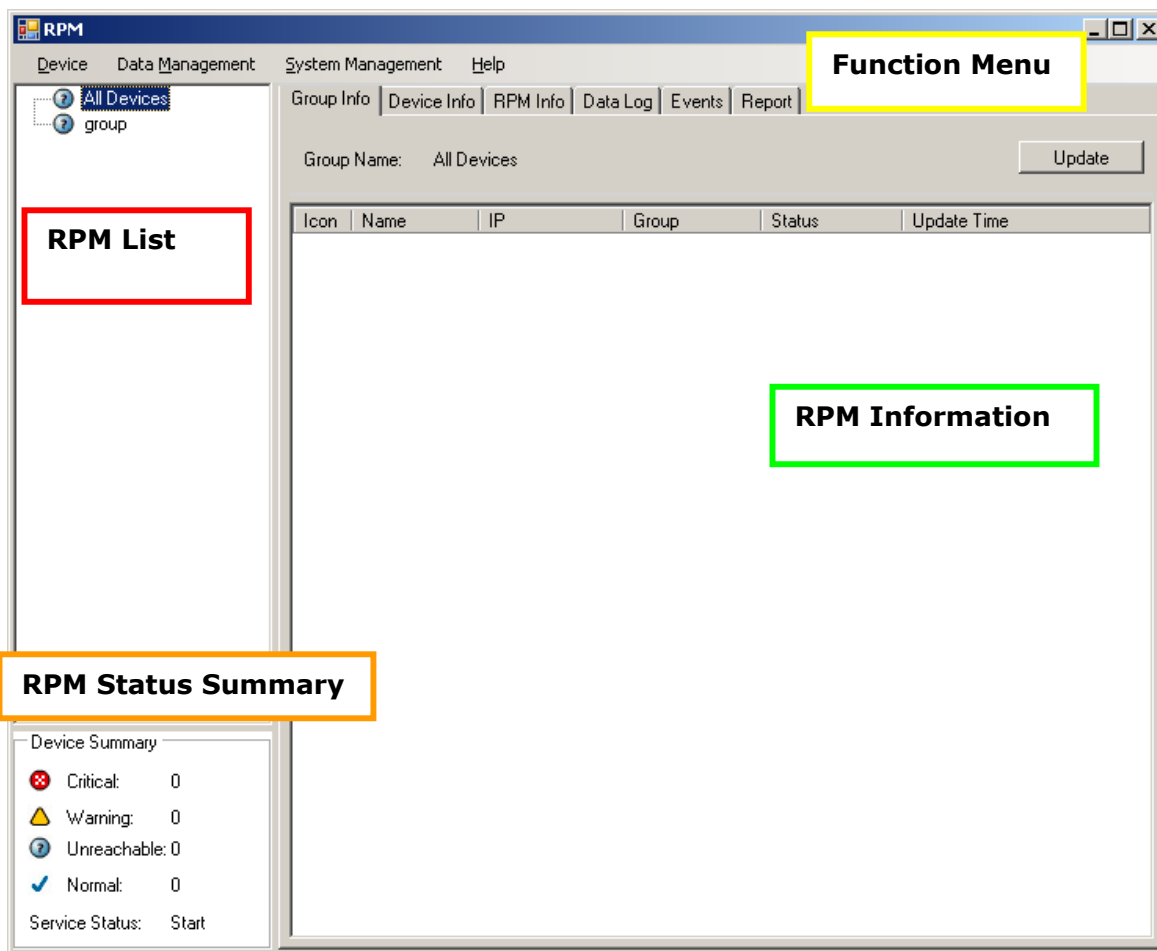
The Login Screen.

The default User Name is admin.

The default Password is 1234.



## The RPM Utility program's main menu



1. **Function Menu:**  
RPM Utility function menu.
2. **RPM List:**  
List all the RPMs in the network; user can define the group to easily manage a large amount of RPMs.
3. **RPM Information:**  
This area provides all the detailed information about the RPM.
4. **Device Summary:**  
Indicates the status of the RPM in the network.

Device Menu

Device

Add Device                      The administrator can manually add the RPM, if the IP address of RPM has already been setup.

The screenshot shows a standard Windows-style dialog box titled "Add Device". Inside the dialog, there is a section labeled "Device Groups" which contains a list box with the word "group" selected. Below this list box are four text input fields, each preceded by a label: "Device IP:", "Community:", "Trap IP:", and "Syslog IP:". At the bottom right of the dialog are two buttons labeled "OK" and "Cancel".

Device Group:                      Set the RPM to a specific group  
SNMP Community:                  Set the community, it must be the same as the RPM in order to communicate with it. **Default setting is “private”**

**Note1:** This community is to “WRITE”.

**Note2:** The “READ” community is set to “public”, and it cannot be changed.  
Trap forward IP:                      When an event occurs, it will forward the trap to the specified NMS.  
Syslog server IP:                      Forward the log to the specified Syslog server.

The administrator can reconfigure the RPM information.

Device Edit

Hostname: SwPDU

Local Settings

Device Groups:

- group

Community: public

Trap Forward IP:

Syslog Server IP:

SNMP Settings

Name: SwPDU

Location: Office

Contact: Admin

Network Settings

IP Address: 192.168.168.231

Modify

OK Cancel

- |                   |   |
|-------------------|---|
| Device Group:     | Change the group that the RPM belongs to.   |
| SNMP Community:   | Set the community, it must be the same as the RPM.<br><b>Note:</b> The community is set to "WRITE". |
| Trap forward IP:  | Change the trap receiver IP address.  |
| Syslog server IP: | Change the Syslog server IP address.  |
| SNMP Settings:    | Modify the SNMP information for the RPM.  |
| Network Settings: | Reconfigure the IP address of RPM.  |

The administrator can change the way that RPM Utility gets the IP.

Modify IP

☐ Dynamic (DHCP)

☒ Static

IP Settings

Original IP: 192.168.168.231

New IP: 192.168.168.232

Netmask: 255.255.255.0

Gateway: 192.168.168.152

OK Cancel

---

Remove Selected Device

Delete the selected IP address of RPM

---

Edit RPM Config

Modify the RPM configuration.

RPM Name: User defines the RPM name.  
Voltage: User defines the voltage.  
Threshold: User defines the RPM Threshold.  
Outlet Name: User defines the outlet name.

Outlet	Outlet Name
▶ Outlet-A	OutletA
Outlet-B	OutletB
Outlet-C	OutletC
Outlet-D	OutletD
Outlet-E	OutletE
Outlet-F	OutletF
Outlet-G	OutletG

---

Remove Selected RPM

Delete the selected RPM

---

Update Device Information

Update the RPM information manually.

---

Add Device Group

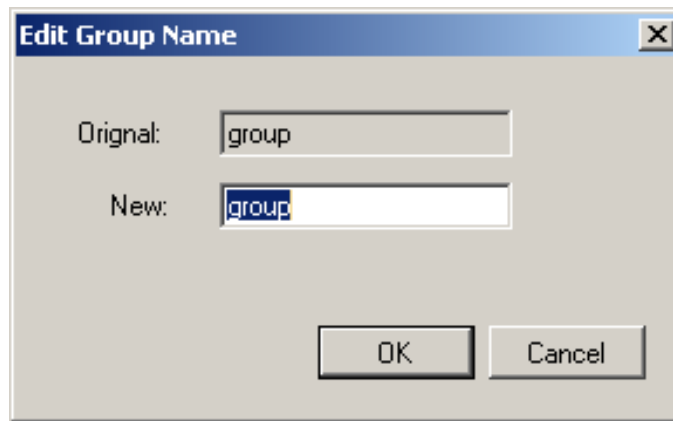
Create a new group.

Group Name:

---

Edit Group

Rename the group



---

Remove Device Group

Delete an existing group. All of the RPMs listed under this group must be removed first.

---

### Data Management Menu

---

Export kW\*hr Account to CSV

Export the power data in CSV format.

---

Export Data Log to CSV

Export the current data log in CSV format.

---

Export Events to CSV

Export the event data in CSV format.

---

Remove kW\*hr Account Records

Delete the power consumption data.

---

Remove Data Log Records

Delete the current data log.

---

Remove Event Records

Delete the event log.

---

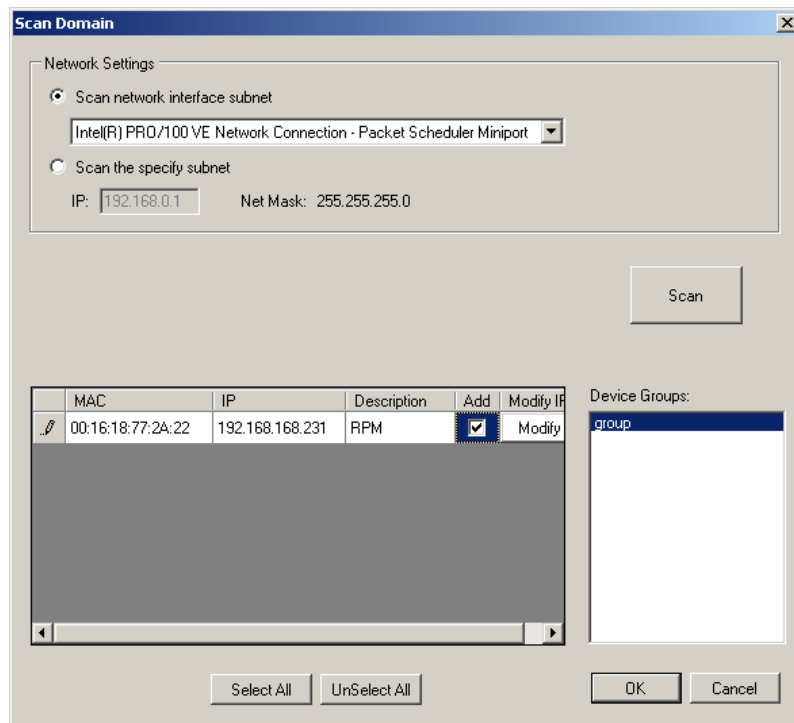
## System Management Menu

### Scan Subnet

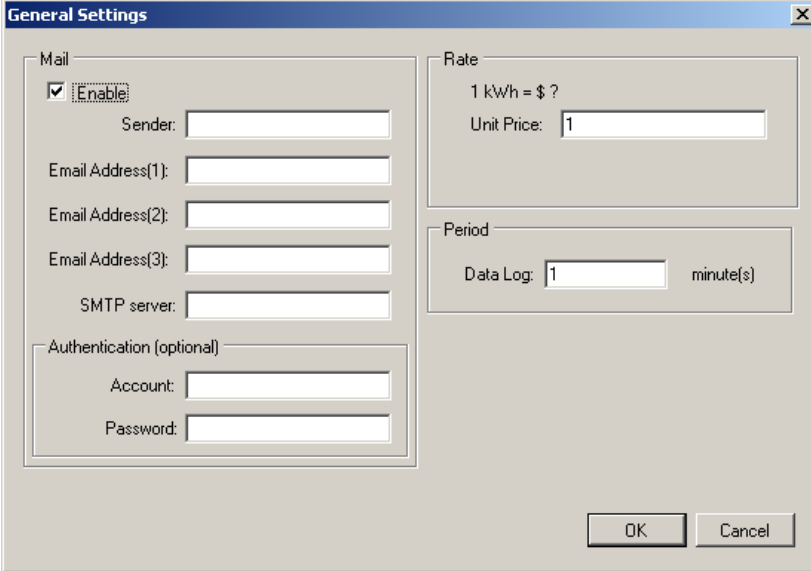
Search for all of the IP addresses of the RPMs that are in the same subnet.

Procedure:

1. Select which way to search for the RPM in the network.
  - Scan the network interface subnet
  - Scan the specified subnet
2. Press the “Scan” Button to search for all of the RPM devices in this subnet.
3. Check the “ADD” box for the device that you want to add to RPM Utility.
4. Select one of the groups in the “Device Group” to group the RPMs.
5. Select “OK” to finish the procedure.







The image shows a 'General Settings' dialog box with a blue title bar and a close button. It is divided into three main sections: 'Mail', 'Rate', and 'Period'. The 'Mail' section on the left includes a checked 'Enable' checkbox, followed by input fields for 'Sender:', 'Email Address(1):', 'Email Address(2):', 'Email Address(3):', and 'SMTP server:'. Below these is an 'Authentication (optional)' group box containing 'Account:' and 'Password:' fields. The 'Rate' section on the top right has a label '1 kWh = \$ ?' and a 'Unit Price:' field with the value '1'. The 'Period' section on the bottom right has a 'Data Log:' field with the value '1' and the unit 'minute(s)'. At the bottom right of the dialog are 'OK' and 'Cancel' buttons.

**Mail:**

When an event occurs, RPM Utility can send out the email message to the pre-defined account.

**Rate:**

User can input the electricity rate to calculate the electric bill for reference.

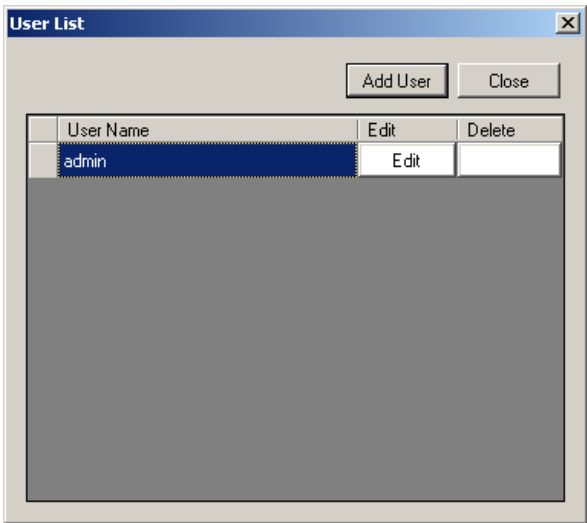
**Period:**

Change the logging time interval of the data Log.

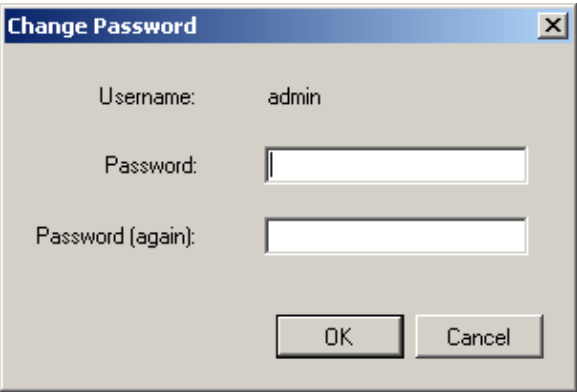
---

User List

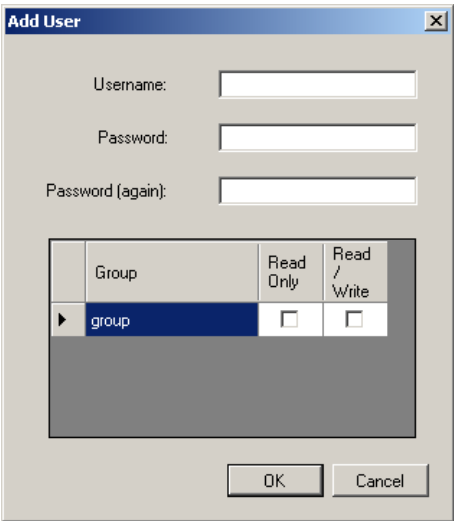
The administrator can add, delete and manage all of the user's privileges here.



Clicking on the Edit tab the user can change the password, but only for the “Admin” account.



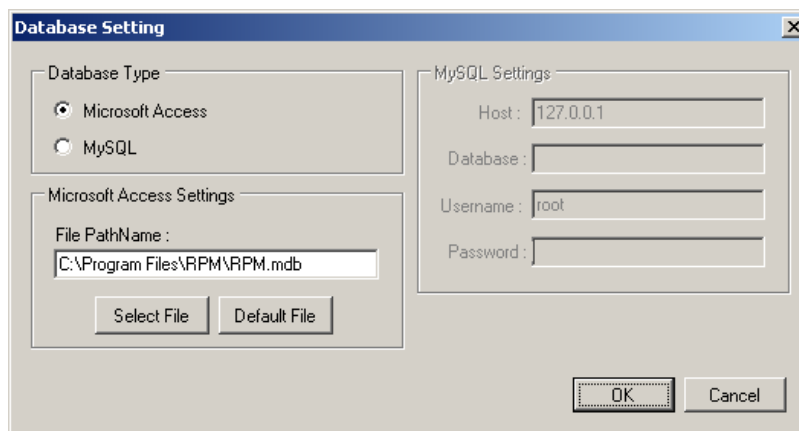
Add user  
User can be assigned to Read only or Read/Write.



---

## Database Setting

Select which database to use.

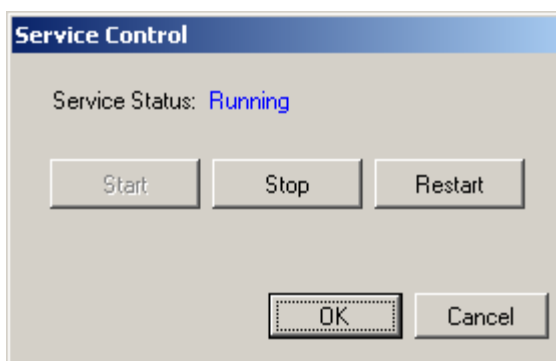


The 'Database Setting' dialog box is divided into two main sections. The left section, titled 'Database Type', contains two radio buttons: 'Microsoft Access' (which is selected) and 'MySQL'. Below this is a section titled 'Microsoft Access Settings' containing a 'File PathName:' label and a text box with the path 'C:\Program Files\RPM\RPM.mdb'. There are 'Select File' and 'Default File' buttons below the text box. The right section, titled 'MySQL Settings', contains four text boxes: 'Host:' with '127.0.0.1', 'Database:', 'Username:' with 'root', and 'Password:'. At the bottom right of the dialog are 'OK' and 'Cancel' buttons.

---

## Service Control

Service control.



The 'Service Control' dialog box displays the 'Service Status:' as 'Running' in blue text. Below the status are three buttons: 'Start', 'Stop', and 'Restart'. At the bottom right are 'OK' and 'Cancel' buttons.

### Note:

If the service cannot start, it could be the SNMP port is being used by another program. Please close the program and then restart the service and Utility program.





---

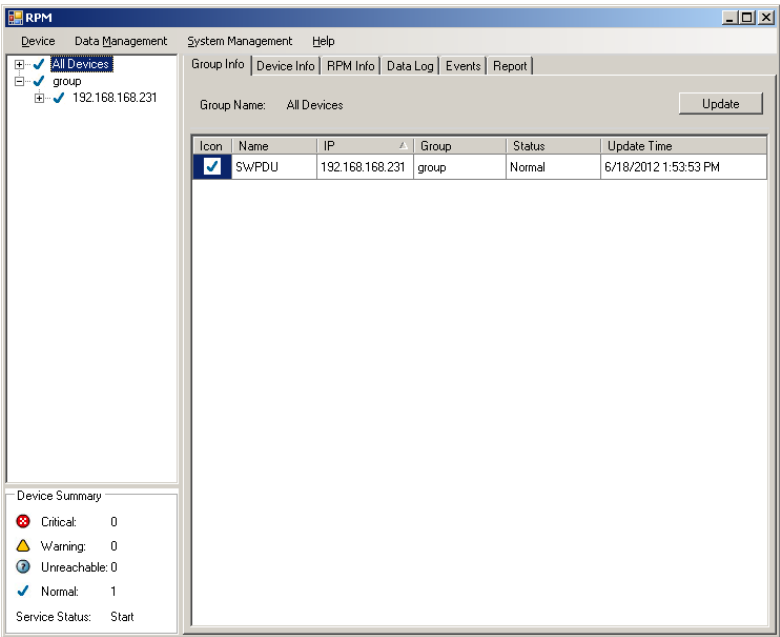
# RPM Information

## Group Information:

This table provides a list all of the RPMs and important information.

### Device Summary

-  Critical:
-  Warning:
-  Unreachable:
-  Normal:
- Service Status
- Indicates that the output power of the RPM has exceeded the overload threshold.
- Indicates that the output power of the RPM has exceeded the warning threshold.
- Indicates that the RPM Utility program cannot reach the RPM.
- Indicates that the RPM is working normally.
- When it indicates “Stopped”, please go to System Management> Service Control to “Start” the service.



- Icon:
- Indicates the RPM status by different icon.
- Name:
- The name of RPM.
- IP:
- The IP address of RPM
- Status:
- Indicates the communication status with RPM Utility.
- Normal: The RPM Utility is communicating with the RPM.
  - Querying: The RPM Utility is requesting data from the RPM.
  - Communication Lost: The RPM Utility cannot communicate with the RPM.
  - Warning: The power consumption of RPM exceeds the warning threshold.
  - Overload: The power consumption of RPM exceeds the overload threshold.
- Update Time:
- The last time the RPM information was updated.

## Device Information:

### Network Information:

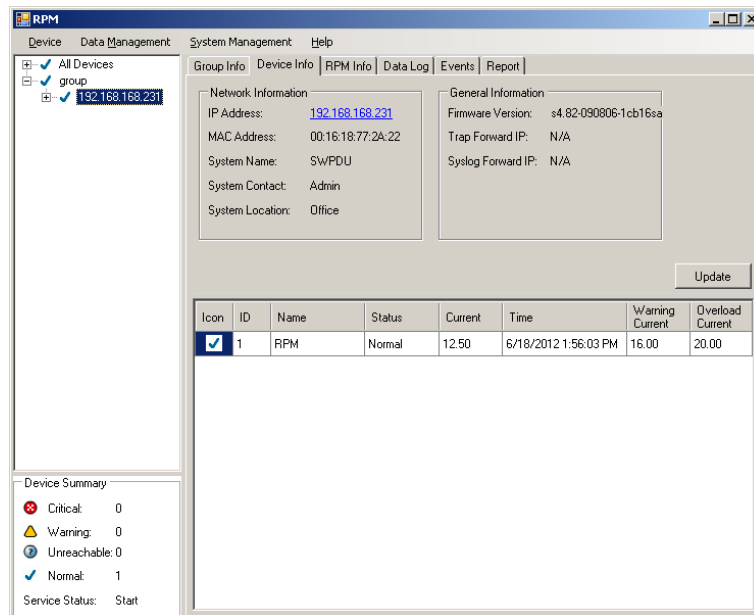
Indicates the network and system information:

- IP Address
- MAC Address
- System Name
- System Contact
- System Location

### General Information:

Indicates the information about the RPM:

- Firmware Version
- Trap Forward IP: Utility can forward the trap to the given IP.
- Syslog Forward IP: Utility can send the log to the given IP.



The connected RPM's information includes:

Icon:	Indicates the RPM status by different icon.
ID:	The identification of RPM.
Name:	The name of RPM
Status:	Indicates the communication status with RPM Utility. <ul style="list-style-type: none"><li>● Normal: The RPM Utility is communicating with the RPM.</li><li>● Querying: The RPM Utility is requesting data from the RPM.</li><li>● Communication Lost: The RPM Utility cannot communicate with the RPM.</li><li>● Warning: The power consumption of RPM exceeds the warning threshold.</li><li>● Overload: The power consumption of RPM exceeds the overload threshold.</li></ul>
Current:	The RPM power consumption.
Time:	The current time.
Warning Current	Displays the setting of the warning threshold.
Overload Current	Displays the setting of the overload threshold.

## RPM Information:

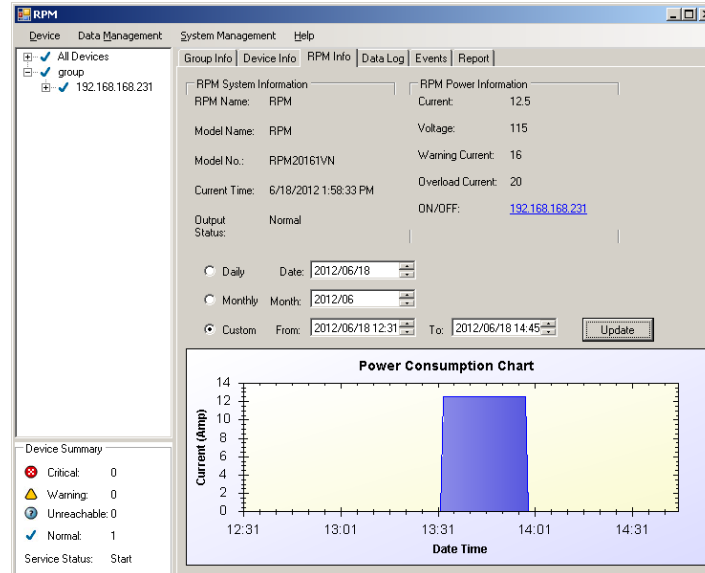
### RPM System Information:

Provides the information and the status of the RPM.

### RPM Power Information:

Provides the RPM power information.

Clicking on the hyperlink will open the RPM's web page.

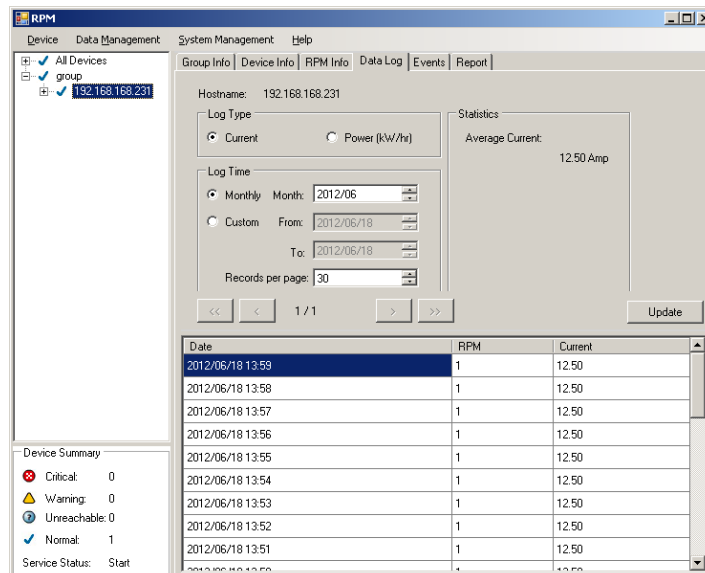


### History Consumption Chart:

Provides the chart for the RPM's power consumption. The administrator can check the record by Daily, Monthly, or Custom-defined time periods.

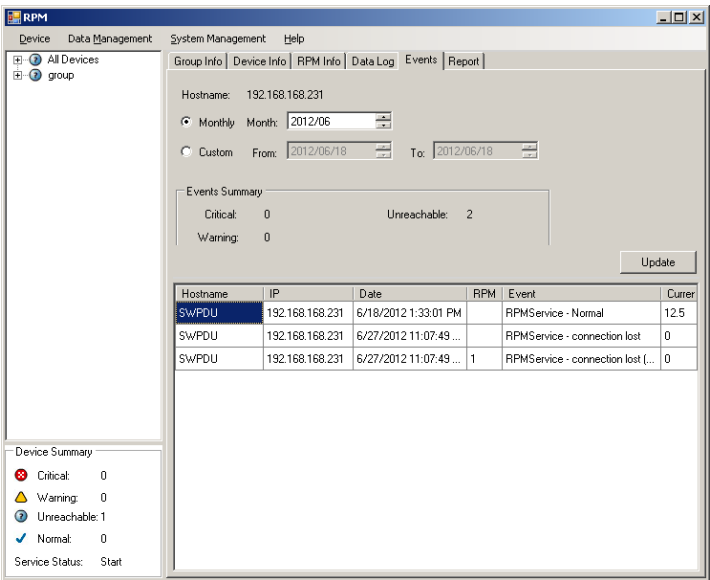
## Data Log:

Provides a list of the RPM's power data.



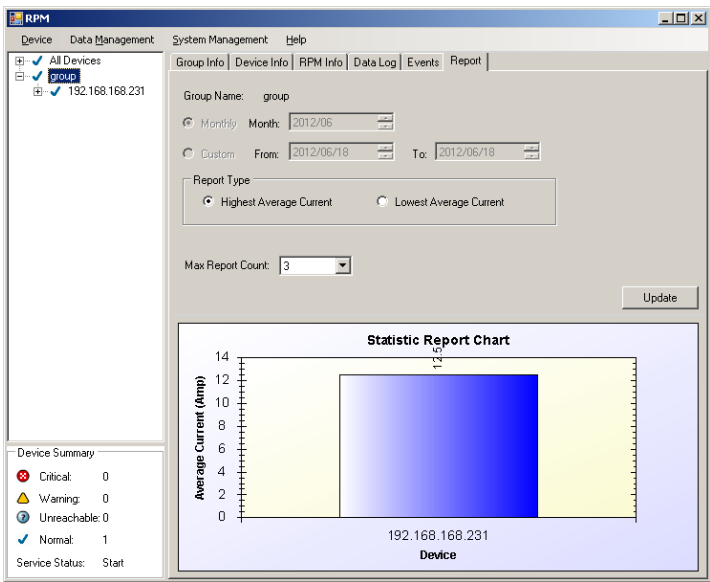
Events:

Provides a list of the logged events.



Report:

Provides the data analysis.



## 4. Technical Assistance

For Technical Support on the Web, please visit the Support section of our Web site or visit our online Discussion Forum.

In order to diagnose the problem you are having, our technicians need the following information from you.

### Installation Site:

Company Name: \_\_\_\_\_

Address: \_\_\_\_\_

City: \_\_\_\_\_ State: \_\_\_\_\_ ZIP code: \_\_\_\_\_

Contact Person's Name: \_\_\_\_\_

Phone Number: \_\_\_\_\_

### If you are a consultant,

Consultant Name: \_\_\_\_\_

Phone Number: \_\_\_\_\_ Fax Number: \_\_\_\_\_

### Computer System:

Operating System and version: \_\_\_\_\_

System Manufacturer: \_\_\_\_\_

System Model Number: \_\_\_\_\_

NMS name and revision number: \_\_\_\_\_

### RPM:

Model Name/Number: \_\_\_\_\_

Serial Number: \_\_\_\_\_

### What are the symptoms?

---

---

---

Please have the information listed above ready when you contact us.

Contact Technical Support By:

Phone: 1-800-238-7272 / 1-972-446-7363

Fax: 1-972-446-9011

Web: [www.minutemanups.com/support/index.php](http://www.minutemanups.com/support/index.php) (Technical Support)  
[www.minutemanups.com/phpBB2/index.php](http://www.minutemanups.com/phpBB2/index.php) (Discussion Board)  
[www.minutemanups.com](http://www.minutemanups.com) (Home Page)