

## SNMP Accessories For Minuteman UPSs

Select Minuteman UPS products are capable of accepting Simple Network Management Protocol (SNMP) communications cards. SNMP is a communications protocol for connecting devices to a Local Area Network (LAN). It can be used to obtain the status of a UPS connected to the network and issue commands to it.

### Features

SNMP option cards provide IT/Network administrators with a comprehensive set of features to manage and monitor UPSs over the LAN:

- Connect the UPS directly to a LAN - utilizing a standard RJ45 Ethernet connection; requires no special application software
- Network UPS management - monitor and manage the UPS over any computer attached to the network
- Integrate UPS into Network Management System (NMS) - using the included MIB (Management Information Base) agent or the included SNMP management software
- Schedule events - shutdown or restart connected equipment daily, weekly, or monthly using the integrated scheduler
- Track utility problems via Event Logs - to provide history of power events on the UPS including: power quality, equipment draw, and blackouts.
- Multiple server shutdown - using the included SNMP management software allows the UPS to shutdown multiple devices sequentially when a power event occurs
- Event Notification - notify multiple IT personnel via SNMP traps or e-mail when a power event occurs
- Telnet Support - for flexible configuration of the SNMP card

#### SNMP Card Specifications

Model	SNMP-NV6
Network Connection	RJ-45 Jack Connection
Operating Temperature	0 ~ 40° C
Operating Humidity	10 ~ 80 %
Power Input	9 ~ 24V DC
Power Consumption	2 Watt Maximum
Size	130 mm x 60 mm (L x W)
Weight	75g

### SNMP Capable UPSs

- Endeavor 6 & 10kVA Tower
- Endeavor LCD 1-3kVA
- PRO-RT2U
- EXR
- Encompass LCD
- Encompass Rack/Tower



SNMP-NV6

### Browser-based Management Cards

Multiple options are available to meet the needs of a variety of network requirements. Cards include:

#### SNMP-NV6

IPv4/IPv6 compliant; compatible with Endeavor 6 & 10kVA Tower, Endeavor LCD 1-3kVA, PRO-RT2U, EXR, Encompass LCD, & Encompass Rack/Tower.

Features include:

- Full compatibility with both **IPv4 and IPv6** standards making it the perfect card for future migration options
- Compatible with **SNMPv1, v2C, and v3** protocols
- Supports **SYSLOG**; send messages to a maximum of four Syslog servers when an event occurs
- Supports **RADIUS Login** application
- User Configurable **Event Alarm** levels
- Adjustable **Low Battery** warning alarm
- Batch **Configurations and Upgrades**

#### NetAgent SNMP-ED

SNMP management compatible with Endeavor 6 & 10kVA Tower UPSs.

## Monitoring Accessories

Multiple accessories are available to provide administrators with a complete monitoring solution for networks.

- ENV Probe - temperature and humidity monitoring module for SNMP - NV6 cards

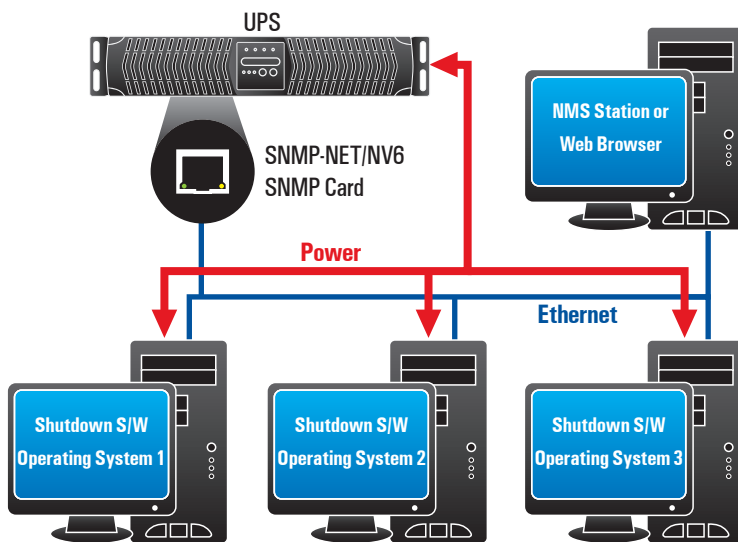


ENV PROBE

### ENV Probe Specifications

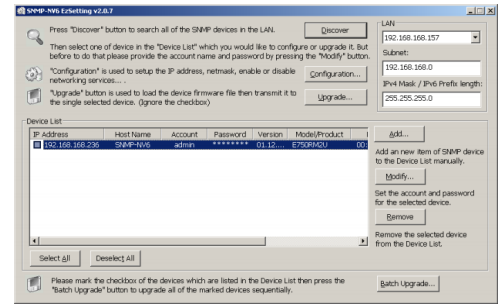
Model	ENV Probe
Size (L x W x H)	2.6" x 2.0" x 1.4"
Weight Net	0.50 lbs
Temperature Measurement	0 ~ 65° C 32 ~ 149° F
Humidity Measurement	20 ~ 90 %
Power Input	12V DC
Power Consumption	400 mw

## System Application Diagram

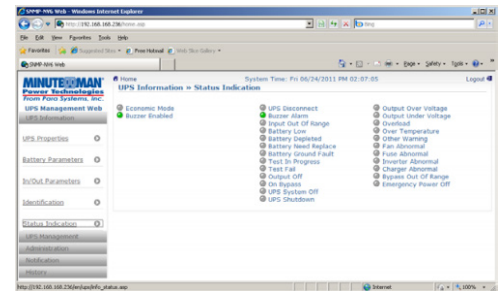


Minuteman SNMP cards are an interface between the UPS and the network. Cards can communicate the status of a UPS and issue commands to it. All Minuteman SNMP cards support SNMP and HTTP protocols for user access. Through the SNMP NMS and/or Web Browser, users can monitor the UPS status, issue commands, and set up the SNMP card through the network.

## SNMP-NV6 Interface



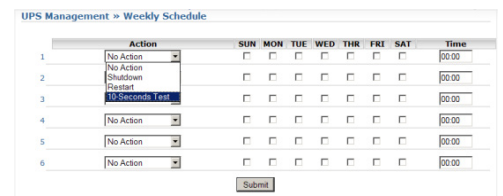
EZSetting configuration screen (NV6)



Web-based status screen (NV6)



UPS/SNMP configuration screen (NV6)



Schedule actions (shutdown, restart, or 10-second test) to happen weekly (NV6)



Minuteman Power Technologies  
972.446.7363 | 800.238.7272  
www.minutemanups.com  
www.sizemyups.com