

*complete protection*  
*exceptional value*



# A Legacy of Protection

Para Systems, Inc. manufactures the Minuteman® line of power protection and power management products. Since 1982, the Minuteman brand has been synonymous with high quality power protection products for the commercial and consumer markets.

Minuteman products include a full spectrum of single and three-phase uninterruptible power supplies that satisfy the exacting requirements of our end-users. Our single-phase UPS products range in power ratings from 400VA to 24kVA and three-phase from 10kVA to 750kVA.

Our reputation for delivering unmatched reliability allows us to offer the industry's best warranty plans.

Businesses large and small rely on Minuteman to protect mission critical hardware - and we take that very seriously. Our customers place their confidence in our products to provide clean, consistent power and uninterrupted uptime, insuring trouble-free operation.

**Minuteman products are sold exclusively through an extensive network of distributors and value-added resellers.**

## Applications



### Workstations

Home office, data entry, graphics computers



### Data Centers

Routers, switches, servers, data storage



### Security Systems

CCTV, DVRs, access control, monitoring



### Telephone & VoIP systems

Communications systems, small phone systems, large VoIPs, legacy PBX, ePBX



### Point-of-Sale Terminals

Cash registers, terminals, scanners, scales



### Factory & manufacturing

Computer-controlled machinery, robotics, conveyors, warehouse management systems

## Customer Support

Providing unrivaled personal service and support has always been our highest priority. Our Texas-based support team is committed to our customers, and technical support requests are answered within a 2-hour window from the time contact is made. We understand the value of your time and we will not waste it.

## Warranty & Platinum Protection Plan®

Minuteman provides three years of coverage on most UPS products vs. one to two years from other manufacturers. Lifetime warranties are also provided on most surge suppressors. Warranty details are included with each product or on our website. Optional five-year warranties are also available for most UPS products.

Minuteman products are also backed by our Platinum Protection Plan. Equipment which is properly attached to one of our power protection devices is safe from damage, or we will repair or replace the damaged equipment. Coverage of attached equipment ranges from \$25,000 to as high as \$200,000 for our high-end UPS products. See details on our packaging or website.

## Green Initiative

A number of Minuteman products comply with the Restriction of certain Hazardous Substances (RoHS) Directive as conceived by the European Union Committee.



In addition, Para Systems offers no-charge battery recycling and many of our products offer energy saving options listed below.

Look for these icons next to our products to see how they can help both the environment and your pocketbook.



**ASD:** Automatic Shutdown & Restart

**ES:** Energy Star Certified

**GM:** Green Mode Equipped

**LS:** Load Shedding

**PCL:** Power Consumption Logging

**PFC:** Power Factor Correction

**RCM:** Recycled and Recyclable Packaging & Collateral

**RoHS:** Restriction of Hazardous Substances compliant

**SBM:** Superior Battery Mgmt for Extended Life

Visit [www.minutemanups.com/green](http://www.minutemanups.com/green) for more details

## Trouble-free UPS Sizing & Selection

Para Systems **SizeMyUPS.com** was the industry's first user-friendly on-line UPS selection guide.

- **Build Your System:** Choose from 1000's devices in our extensive catalog
- **Narrow your options:** Set UPS types, voltages, and desired runtime to find the perfect solution
- **Narrow your options:** Print, fax, or email spec sheets, and find a distributor from product pages

**SizeMyUPS.com** *Fast, easy UPS selection*

Interactive Sizing 1.0 (Show/Hide Equipment Library) - Goto Original [SizeMyUPS.com](http://SizeMyUPS.com)



# The Benefits of Power Protection

**Power anomalies are a fact of life**, and account for 37% of business disruption according to Frost & Sullivan. Some sort of power problem has affected us all, whether it has been a power outage that caused an interruption of productivity, or equipment and data files that have sustained damage.

The cost associated with repair or replacement of equipment or recovery of corrupted data files can be substantial no matter the size of your organization. Power protection devices pay for themselves the first time a power problem occurs in many cases.

The most common power problems include:

- Sags/Brownouts - 88%
- Spikes - 6%
- Blackouts - 5%
- Surges - 1%

## Surge Suppressors

If you are seeking basic power protection to prevent spikes and surges from causing catastrophic damage to circuit boards, power supplies, and other internal components, Minuteman's line of surge suppressors will meet your needs.

- Cost-effective protection for peripherals, printers, and other equipment which will not be required during a power event

## Uninterruptible Power Supplies

The full line of Minuteman uninterruptible power supply solutions provide maximum protection to shield your equipment from catastrophic damage while also providing battery backup during power outages.

- Complete protection from all power problems
- Provides backup power during outages and brownouts
- Three types: Standby, Line-interactive, On-line

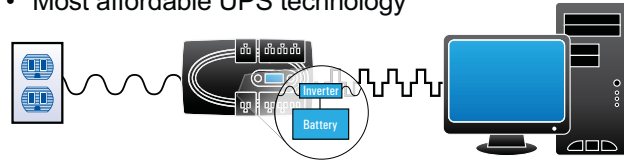
## Three-Phase UPS

Para Systems has forged an alliance with General Electric (GE) Digital Energy Systems, providing our customers access to a comprehensive line of premium quality three-phase UPS products that offer solutions up to 750kVA.

For further information on these products, visit [www.minutemanups.com/3phase](http://www.minutemanups.com/3phase).

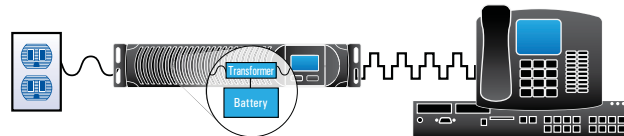
## Stand-By UPS (Good)

- Provides full protection from surges, spikes, sags, blackouts and brownouts
- Switches to battery mode during brownouts, blackouts and over-voltages
- Most affordable UPS technology



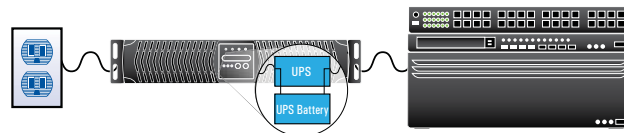
## Line Interactive UPS (Better)

- Provides full protection from surges, spikes, sags, blackouts and brownouts
- Provides voltage regulation during sags and surges (boost and buck)
- Preserves battery power for blackouts so that batteries last longer



## On-Line UPS (Best)

- Maximum protection from surges, spikes, sags and blackouts
- Continuously passes incoming power through a double-conversion (AC-to-DC-to-AC) inverter
- Reacts instantaneously to brownouts, blackouts and over-voltages – no switching time to battery mode



## Online Training

Minuteman offers training via [minutemanups.com](http://minutemanups.com) that covers the basics of power protection and UPSs. BICSI members can receive CEC credit for select sessions.

For more information on these training sessions, visit [minutemanups.com/training](http://minutemanups.com/training)

## Table of Contents

Series .....	Page	Entrust and EnSpire Series .....	10
Endeavor Series .....	4	SentryPlus Software .....	11
Extended Runtime .....	6	Remote Power Manager .....	12
EnterprisePlus Series .....	7	Power Distribution Units .....	13
PRO-RT Series .....	8	Surge Products .....	14
PRO-LCD Series .....	9	SNMP.....	15

# Endeavor® Series On-line UPS Maximum Protection

The **Minuteman Endeavor Series** is our premier product, providing the highest level of protection and power management capabilities. The Endeavor Series combines double-conversion technology with industry-

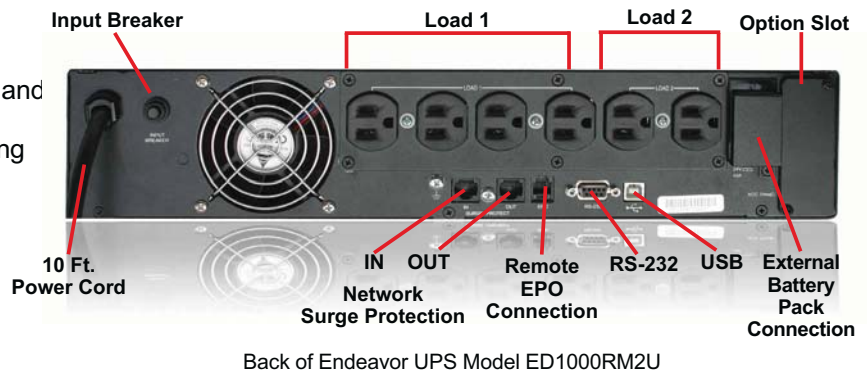
leading features in a versatile case design that allows the units to be installed in many different formats and environments.

In developing one of the best-valued, highest quality UPS products on the market, the Endeavor Series offers these standard features:

- True double-conversion topology
- Front panel display with load/battery meter and status indicators
- True sinewave output supplied to attached equipment
- Extended runtime using external battery packs
- Floor-standing tower, 19-inch rack and cabinet installation kits included (23-inch rack and wallmount kits optional)
- Up to 0.8 power factor (in watts), allowing larger equipment capacities
- Output receptacle control for non-critical load shedding capability
- Simultaneous RS-232, USB and SNMP communications
- Minuteman® SentryPlus™ UPS monitoring and control software
- Three-year non-prorated warranty (including batteries)
- Dedicated remote Emergency Power Off (EPO) port
- 120V and 208V models available
- Hot-swappable batteries
- RoHS compliant
- UL listed

**Extended Runtime:**  
Use XL or EXL Battery Packs  
(page 6)

Endeavor UPS Model ED2000RM2U with tower mount stand provided (standard)



Visit [minutemanups.com/endeavor](http://minutemanups.com/endeavor) for more information



Endeavor On-line UPS Model	VA/Watts	Internal Batteries Number/Type	Half load/Full load Runtime (Min.)	Receptacles	Dimensions (inches) HxWxD	Net weight	Standard Comm Port
Endeavor ED1000RM2U	1000/800	BM0035	13/4 min.	6 UPS	3.5 x 17.3 x 13.1	28.6 lbs.	RS-232,USB
Endeavor ED1500RM2U	1500/1200	BM0036	13/4 min.	6 UPS	3.5 x 17.3 x 17.0	46.2 lbs.	RS-232,USB
Endeavor ED2000RM2U	2000/1600	BM0037	13/4 min.	7 UPS	3.5 x 17.3 x 17.0	46.2 lbs.	RS-232,USB
Endeavor ED3000RM2U	3000/2100	BM0032	15/5 min.	7 UPS	3.5 x 17.3 x 24.0	67.7 lbs.	RS-232,USB
Endeavor ED6200RM with 1 battery module	6000/4200	20-12V7.2Ah	23/9 min.	Hardwire or receptacle box	8.75 x 17.3 x 26.8	173 lbs.	RS-232

CPE On-line UPS Model	VA/Watts	Internal Batteries Number/Type	Half load/Full load Runtime (Min.)	Receptacles	Dimensions (inches) HxWxD	Net weight	Standard Comm Port
CPE 1000	1000/700	3-12V7.2Ah	23/8 min.	4 UPS	8.78 x 5.80 x 15.80	33.1 lbs.	RS-232
CPE 2000	2000/1400	6-12V7.2Ah	22/7 min.	6 UPS	14.40 x 5.10 x 18.90	59.5 lbs.	RS-232
CPE 3000	3000/2100	8-12V7.2Ah	23/8 min.	8 UPS	14.40 x 7.50 x 17.80	79.4 lbs.	RS-232

# Endeavor® 6-24kVA On-line Modular UPS

## 6kVA On-line Rackmount UPS Features

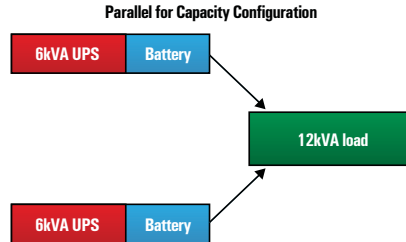
- Simple parallel installations (no extra PCB required)
- Programmable, digital signal processor design
- Easy-to-set user personalization
- Intelligent self-diagnosis
- Emergency Power Off (EPO) port
- True double-conversion on-line technology
- High input power factor and low voltage THD
- Energy efficient UPS
- LCD/LED panel
- 2 customer options slots
- Internal maintenance bypass
- i-Batt (automatically manages end of discharge voltage according to load capacity)
- Communication capability via SNMP/web card
- Access UPS via the internet
- Remotely test the major operating functions of UPS

## Options

- Maintenance bypass switch
- Galvanic isolated stepdown (120V) transformer

## Parallel for Capacity Configurations

This configuration uses mirrored Endeavor 6kVA rackmount UPS systems to support loads higher than 4200 watts. Currently, parallel capacity configurations can be used to accommodate output loads of 12, 18 and 24kVA for 208V/240V systems.



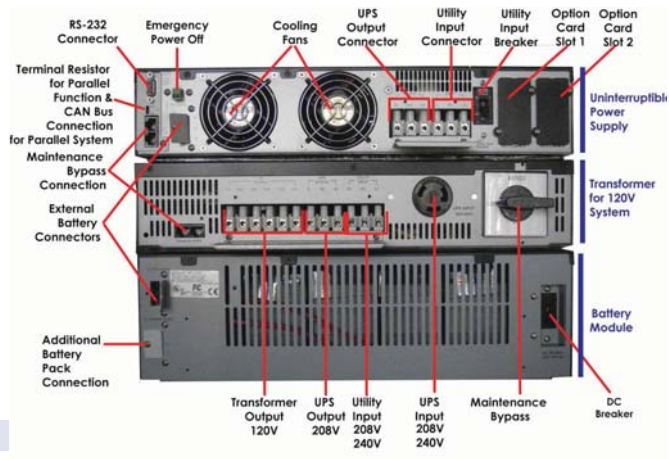
## Parallel for Capacity Configuration Table

Model	ED12000RM	ED18000RM	ED24000RM
Input	12kVA 208V / 240V	18kVA 208V / 240V	24kVA 208V / 240V
Output Load	12kVA 208V / 240V	18kVA 208V / 240V	24kVA 208V / 240V
Watts	8400	12600	16800
Rack Height	10 U	15 U	20 U
ED6200RM	2	3	4
EDBP6000RM Battery Pack	2	3	4
ED6- PARALLEL Parallel Kit	1	1	1
ED-MTBS	1	1	1

[minutemanups.com/endeavor6kva](http://minutemanups.com/endeavor6kva)



**Extended Runtime:**  
Use EDBP6000RM  
Battery Packs

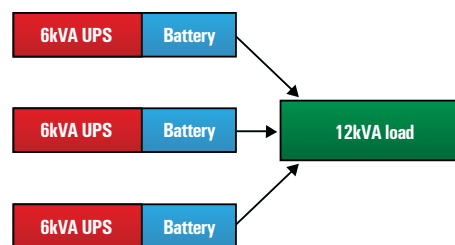


## Redundancy (N+1) Configurations

This configuration is used to provide redundancy backup. When one UPS is taken offline, this configuration allows the load to be redistributed to the remaining UPS units.

## Redundancy (N+1) Configuration Table

Model	ED6000RMN1	ED6200RMN1
Input	6kVA 208V / 240V	6kVA 208V / 240V
Output Load	6kVA 120V	6kVA 208V / 240V
Watts	4200	4200
Rack Height	14 U	10 U
ED6200RM	2	2
EDBP6000RM Battery Pack	2	2
ED6000RMXFMR	2	n/a
ED6- PARALLEL Parallel Kit	1	1



# Endeavor<sup>®</sup> 6 & 10kVA On-line Tower UPS

The Endeavor Tower Series is yet another option for applications that require the best protection available. This feature-rich, single-phase, true on-line UPS has been designed to support large loads for data centers, large telephone systems, and other mission-critical applications.

Perfectly regulated, continuous sinewave output with zero transfer time offers guaranteed uptime and compatibility with all equipment types.

## Endeavor 6 & 10kVA Features

- True on-line topology with pure sinewave output
- Single-phase, 208 input, 120/208/240 output options
- Parallel configurations for 6, 10, 12, 18, 20, and 24kVA
- LCD and LED visual indicators
- Extended runtime with external battery packs
- Fully programmable, digital signal processor controlled
- Intelligent self-diagnosis
- Emergency Power-off (EPO) port
- Communications capability via RS-232 or optional SNMP (2 slots)
- Energy efficient UPS
- High input power factor and low voltage THD
- Remotely test the major operating functions of UPS
- Optional maintenance bypass
- Galvanic isolation stepdown

**Extended Runtime:**  
Use EDBP10000T  
Battery Packs



Visit [minutemanups.com/endeavor610kva](http://minutemanups.com/endeavor610kva) for more information



## Endeavor On-line Tower

UPS Model	VA/Watts	Internal Batteries Half load/Full load		Receptacles*	Dimensions (inches) HxWxD	Net weight	Comm Port
		Number/Type	Runtime (Min.)				
ED6000T (208V in/120 & 208/240V out)	6000/4200	20-12V7.2Ah	21/8 min	Hard-wired	25.4 x 11.4 x 29.4	275 lbs.	RS-232
ED6200T (208V in/208/240V out)	6000/4200	20-12V7.2Ah	21/8 min	Hard-wired	25.4 x 11.4 x 29.4	165 lbs.	RS-232
ED10000 (208V in/120 & 208/240V out)	10000/7000	20-12V9Ah	15/5 min	Hard-wired	25.4 x 11.4 x 34.7	374 lbs.	RS-232
ED10200 (208V in/208/240V out)	10000/7000	20-12V9Ah	15/5 min	Hard-wired	25.4 x 11.4 x 29.4	264 lbs.	RS-232

## Extended Runtime Battery Packs

Compatible with Endeavor 1-3kVA and EnterprisePlus Series

The average power outage is about 20 minutes, but the average extended power outage is nearly 8 hours. These types of long blackouts can be very costly to any business.

To protect critical devices through extended blackouts, the EnterprisePlus and Endeavor 1-3 kVA UPS Series are able to utilize the XL Series of external battery packs that can be daisy-chained to provide a virtually unlimited amount of battery runtime.

### Market-leading Innovations

Our first extended runtime UPS was offered to the market more than 20 years ago. Since then, Minuteman extended runtime products have carved out a reputation for reliability when reliability means the most. The XL and EXL battery packs provide additional choices for our customers with extreme runtime requirements, adding further to the Minuteman legacy of innovative product offerings.



### XL Battery Packs

EnterprisePlus and Endeavor 1-3 kVA UPS Series are able to utilize the XL Series of external battery packs that can be daisy-chained to provide a virtually unlimited amount of battery runtime.

### XL Battery Pack Features

- Independent battery chargers
- Identical case designs with UPS
- 2U rack height
- Rack/tower/wall configurations

### EXL Battery Packs

When extreme backup times are required, the Minuteman EXL series battery packs provide a very cost-effective means to achieve long uptime.

### EXL Battery Pack Features

- Daisy-chain to achieve unlimited runtime
- High-powered batteries
- 3U rack height
- Rack/tower configurations

# EnterprisePlus™ LCD Line Interactive UPS

The Minuteman EnterprisePlus LCD Series is the latest in Minuteman's popular Enterprise Series. Enhancements to EnterprisePlus LCD offer users more of what has made the series one of our best selling lines.

The EnterprisePlus LCD Series now comes in two models - standard runtime, and XL extended runtime. This allows users to save up to 13% when external battery packs are not needed.

Updates include an informative LCD status display, boosted surge protection ratings, and additional outlets to greatly increase versatility. In addition, select models now meet EnergyStar™ standards, helping save on utility bills.

- **True Sine Wave output** - ideal high-value solution for sensitive devices
- **Choose your runtime** - save money with standard runtime models when external battery packs are not needed
- **Load-shedding** - 3 separate load banks allow increased runtime for vital equipment
- **RoHS 2 & Energy Star Compliant** - environmentally conscious backup for your systems

## Additional Features:

- True sinewave output with low Total Harmonic Distortion (THD)
- Rackmount brackets and floormount stand included (wallmount and 23" Rackmount optional)
- Manual and automatic intelligent self-test
- Easy to read front panel LCD display - with load/battery meter
- Unlimited runtime capability XL Models
- Dedicated remote Emergency Power Off (EPO) port
- 120V and 208V models available
- RoHS 2 compliant
- Energy Star Certified<sup>1</sup>
- UL Listed



Model E750RTL2U UPS with rack ears (left) and included tower feet (right)

**XL Models:**  
Add XL or EXL Battery Packs  
(page 6)



- 1 Unit Status Indicators
- 2 Load & Battery Meters
- 3 Power Status, Runtime
- 4 Scroll, Mute, Power Controls



- 1 Remote EPO Connection
- 2 USB Comm. Port
- 3 RS-232 Comm. Port
- 4 Output Voltage Dipswitch
- 5 Network/Phone Surge
- 6 External Battery Connection
- 7 SNMP Option Slot
- 8 Output Receptacles (Load 1)
- 9 Output Receptacles (Load 2)
- 10 Output Receptacles (Load 3)
- 11 Input Circuit Breaker
- 12 10 ft. Power Cord

Visit [minutemanups.com/enterprisepluslcd](http://minutemanups.com/enterprisepluslcd) for more information



## EnterprisePlus LCD Line Interactive

UPS Model	VA/Watts	Battery Module No.	Half load/Full load Runtime (Min.)	Receptacles	Dimensions (inches) LxWxH	Net weight	Standard Comm Port
E750RT2U / E750RTL2U	750/600	BM0029	17/8 min	8 UPS	17.4 x 19.0 x 3.5	41.2 lbs.	RS-232,USB
E1000RT2U/E1000RTL2U	1000/800	BM0029	15/5 min	8 UPS	17.4 x 19.0 x 3.5	43.7 lbs.	RS-232,USB
E1500RT2U / E1500RTL2U*	1500/1200	BM0030	11/4 min	8 UPS	17.4 x 19.0 x 3.5	44.1 lbs.	RS-232,USB
E2000RT2U / E2000RTL2U <sup>2</sup>	2000/1760	BM0031	13/5 min	9 UPS	24.0 x 19.0 x 3.5	72.1 lbs.	RS-232,USB
E3000RT2U / E3000RTL2U* <sup>2</sup>	3000/2560	BM0032	8/3 min	8 UPS	24.0 x 19.0 x 3.5	78.0 lbs.	RS-232,USB

\*208V (RTL2U) model also available; <sup>1</sup>Energy Star Certification on 1500, 2000, 3000VA models; <sup>2</sup>Rail mount kit included

# PRO-RT™ Line Interactive UPS Series

The **Minuteman PRO-RT™ Series** delivers the complete protection of Automatic Voltage Regulation in a flexible package that can be installed in a rack, tower, or optional wall mount configuration.

The PRO-RT is a value-priced, yet feature-rich UPS incorporating line-interactive technology that preserves battery power by providing voltage regulation during brownouts or voltage sags. The PRO-RT Series can be used to support servers, telecom or VoIP systems, security systems, plus many other applications.

The PRO-RT product line also provides an LCD display to show realtime UPS status information and events. It's perfect for entry-level data center installations and includes a standard SNMP slot typically found on more expensive UPS models (see page 15 for details on SNMP).

- **Rack/Tower/Optional Wall** - versatile configuration
- **LCD Display** - take the guesswork out of UPS status
- **RS-232 and USB Communications** - adaptable to a wide range of network systems
- **SNMP Option Slot** - add an optional SNMP communications card for ultimate control of your power and attached devices
- **RoHS Compliant** - environmentally conscious backup for your systems

## Additional Features:

- Simulated sinewave output with Automatic Voltage Regulator for efficient protection
- Rack/tower/optional wall installation options (2U rack height)
- Minuteman SentryPlus monitoring software is included
- RS-232 and USB Communications
- No special drivers required for USB communications. PRO-RT is automatically recognized by Microsoft® Windows® as an HID-compliant device
- SNMP compatible - PRO-RT units can be managed on a network with the addition of an optional SNMP management card.
- Fax/Modem/Network Line Protection
- RoHS Compliant - all PRO-RT products are manufactured using non-hazardous\* materials



- 1 Unit Status Indicators
- 2 Load & Battery Meters
- 3 Power Status, Runtime
- 4 Scroll, Power Controls



Model PRO1500RT UPS with rack ears (left) and tower feet (right)



- 1 USB Comm. Port
- 2 RS-232 Comm. Port
- 3 Phone/Fax/Network Port
- 4 SNMP Accessory Panel
- 5 Six (6) Battery & Surge Outlets
- 6 Two (2) Surge-only Outlets
- 7 10 ft. Input Power Cord
- 8 Input Circuit Breaker

Visit [minutemanups.com/prort](http://minutemanups.com/prort) for more information



## PRO-RT Line Interactive (Rack/Tower/Wall Mount)

UPS Model	VA/Watts	Battery Module No.	Half load/Full load Runtime (Min.)	Receptacles	Dimensions (inches) HxWxD	Net weight	Standard Comm Port
PRO1000RT	1000/700	BM0043	17/5	6 UPS/2 Surge	3.50 x 17.30 x 15.70	35.1 lbs.	RS-232, USB
PRO1500RT	1500/1050	BM0044	17/5	6 UPS/2 Surge	3.50 x 17.30 x 15.70	43.0 lbs.	RS-232, USB



# PRO-LCD™ Line Interactive UPS Series

The Minuteman PRO-LCD Series delivers complete protection in an amazingly compact space on a desktop or under a console. The PRO-LCD product line is the latest in our highly successful PRO series, and provides more runtime than competitive products by packing in more battery power.

The PRO-LCD's battery layout and highly efficient architecture provide larger capacities than competitive units. This allows the PRO-LCD to handle larger electrical loads than similarly rated competitive units,

or keep equally sized loads running longer when an outage occurs. Efficient components also mean the PRO-LCD has a higher power factor than competitors, allowing each model to support larger loads.

Designed for use with workstations, small servers, network peripheral devices, small telephone, and security systems. The PRO Series has a long legacy of providing reliable protection, with over 400,000 units sold.



## PRO-LCD Features

- Automatic Voltage Regulation (AVR)
- Longer runtime with high powered batteries
- LCD Status Display (shows power status, UPS & battery status, estimated runtime)
- Surge protection for network or a phone line
- Minuteman's SentryPlus™ power management and diagnostic software
- Three-year warranty (including batteries)
- RoHS compliant, cTUVus

## Look beyond Full & Half Load

PRO-LCD's larger capacities mean estimated runtimes at industry standard loads are greater than the specified full and half load figures:

PRO500LCD	PRO700LCD	PRO1100LCD
14.8 min @ 300W	19.2 min @ 420W	18.8 min @ 660W
38.9 min @ 150W	47.8 min @ 210W	38.1 min @ 450W



- 1 Unit Status Indicators
- 2 Load & Battery Meters
- 3 Power Status, Runtime
- 4 Scroll, Power Controls



- 1 Phone/Fax/Network Port
- 2 USB Comm. Port
- 3 Two (2) Surge-only Outlets
- 4 Six (6) Battery & Surge Outlets
- 5 10 ft. Input Power Cord
- 6 Input Circuit Breaker

Visit [minutemanups.com/prolcd](http://minutemanups.com/prolcd) for more information

## PRO-LCD Line Interactive

UPS Model	VA/Watts	Battery Module No.	Half load/Full load Runtime (Min.)	Receptacles	Dimensions (inches) HxWxD	Net weight	Standard Comm Port
PRO500LCD	500/350	BM0048	15/4	6 UPS/2 Surge	7.87 x 6.69 x 11.81	19.8 lbs.	USB
PRO700LCD	700/490	BM0049	17/5	6 UPS/2 Surge	7.87 x 6.69 x 11.81	26.0 lbs.	USB
PRO1100LCD	1100/770	BM0050	16/5	6 UPS/2 Surge	7.87 x 6.69 x 14.56	36.4 lbs.	USB



# Entrust® Line Interactive UPS Series

The Minuteman Entrust Series provides users with all the features usually found in higher-priced UPS products, offering voltage regulation, spike and surge protection, plus battery backup.

The Entrust Series supports workstations, small servers, network peripheral devices, small telephone, and security systems. The small footprint is ideal for placement on or under a desk. All models in the series can also be installed horizontally on a shelf, in a rack, or cabinet installation.

Each Entrust model includes Minuteman's SentryPlus power management and diagnostic software. When installed on a workstation or server, the user gains complete control over monitoring and managing the UPS using a convenient web browser-based interface.

## Entrust Features

- Automatic Voltage Regulator insures stable power without constant use of internal batteries
- Compact size ideal for tight spaces in desks, cabinets, server and security closets
- USB port for included SentryPlus management software
- Network, phone/fax surge protection
- 4 battery backup receptacles, 4 surge-only (1 each with transformer-friendly spacing)
- Simulated sinewave output
- RoHS Compliant
- UL listed



Visit [minutemanups.com/entrust](http://minutemanups.com/entrust) for more information



## Entrust Line Interactive

UPS Model	VA/Watts	Battery Module No.	Half load/Full load Runtime (Min.)	Receptacles	Dimensions (inches) HxWxD	Net weight	Standard Comm Port
ETR500	500/300	BM0052	9/2	4 UPS/ 4 Surge	10.8 x 3.43 x 10.9	13.2 lbs.	USB
ETR700	700/420	BM0053	10/3	4 UPS/ 4 Surge	10.8 x 3.43 x 10.9	15.4 lbs.	USB
ETR1000	1000/600	BM0040	14/4	4 UPS/ 4 Surge	10.8 x 3.43 x 16.4	28.8 lbs.	USB
ETR1500	1500/900	BM0041	11/3	4 UPS/ 4 Surge	10.8 x 3.43 x 16.4	29.3 lbs.	USB

# EnSpire™ Standby UPS Series

The Minuteman EnSpire Series is an economically priced UPS line that provides the features needed to protect your valuable equipment.

The EnSpire UPS' small footprint is designed with outlets on the top for placement on or under a desk or table, and all models can be wall mounted.



**Compact & wall-mountable:**  
Ideal workstation protection

## EnSpire Features

- USB port for SentryPlus management software
- LCD Status Display (750 & 900VA only)
- Up to 8 receptacles
- Transformer-friendly outlet spacing
- RoHS and UL1778 compliant

Visit [minutemanups.com/sentryplus](http://minutemanups.com/sentryplus) for more information



## EnSpire Standby

UPS Model	VA/Watts	Battery Module No.	Half load/Full load Runtime (Min.)	Receptacles	Dimensions (inches) HxWxD	Net weight	Standard Comm Port
EN400	400/200	BM0042	10/2	3 UPS/3 Surge	11.97 x 4.84 x 3.35	6.4 lbs.	USB(RJ-45)
EN600	600/300	BM0042	10/2	3 UPS/3 Surge	11.97 x 4.84 x 3.35	7.0 lbs.	USB(RJ-45)
EN750	750/400	BM0054	10/2	4 UPS/4 Surge	12.40 x 7.20 x 3.30	9.4 lbs.	USB(RJ-45)
EN900	900/500	BM0055	10/2	4 UPS/4 Surge	12.40 x 7.20 x 3.30	9.7 lbs.	USB(RJ-45)

# SentryHD™ Monitoring Software

In today's complex world of data, networking, and software, control and management of applications is vital. This is especially true when it comes to the power that is supplied to these devices.

SentryHD is the latest update to Minuteman's popular Sentry monitoring and management software. This powerful tool provides users and network managers with a clear picture of what is happening

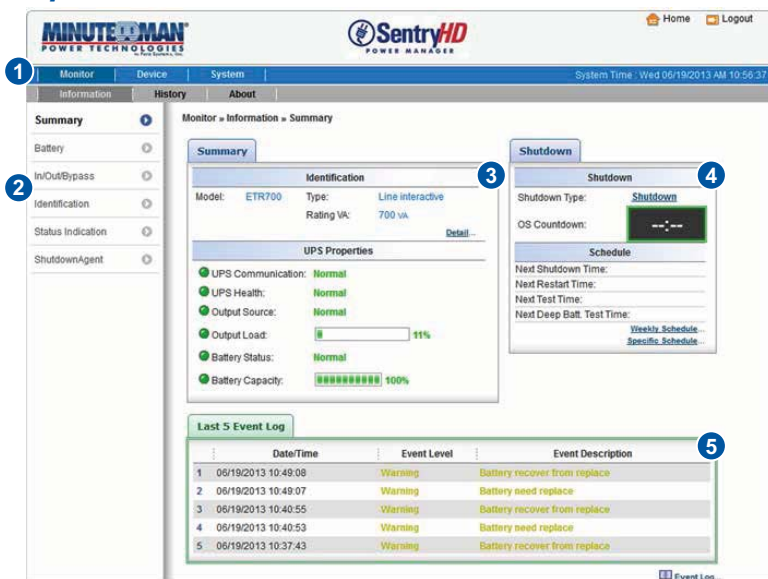
with their power, allowing total control before, during, and after power problems.

With a simple connection to the UPS via USB or RS-232, SentryHD provides the capability to configure UPSs, monitor power, and diagnose issues, all from secure connections on the network. This eliminates wasteful runs around the facility, saving time and money.

Visit [minutemanups.com/sentryhd](http://minutemanups.com/sentryhd) for more information



## SentryHD Dashboard



The main dashboard of SentryHD gives you access to multiple parameters, keeping you up to date on power status, upcoming shutdowns, and recent power events.

- 1 Main menu bar (see below)
- 2 Navigation tabs
- 3 UPS Status Summary
- 4 UPS Shutdown Status
- 5 Recent Events Log

## Monitor

View UPS, power, and battery status, power and UPS event logs, data logs, and configuration information

## Device

Configure, control, manage alarm levels, & schedule shutdowns for your Minuteman UPS

## System

View/edit system information, manage users, & batch configuration settings for multiple devices



## SentryHD Overview

- Monitor, manage, and safely shutdown Minuteman UPSs via USB, RS-232, or ethernet connection
- Simultaneous USB and RS-232 communications for added flexibility (on select models)
- Sends notifications of power events via email, SMS
- Schedule shutdown and startup of equipment to save energy
- Batch Configuration capable, saving valuable setup time
- 32 & 64-bit operating system support
- User-programmable alarm levels - customize warnings
- Supports UPS load-shedding to extend runtime for critical components (on select models)

## Features & Compatibility

- SNMP/Ethernet compatibility
- Concurrent monitoring through single or multiple computers via RS-232, USB, and Ethernet connections
- Supports SNMP v1, v2c, and v3 traps for integration into the Network Management System
- Secure connection: HTTPs and SSL support
- Remote monitoring, control, multi-computer shutdown/restart and configuration through TCP/IP network
- Monitor and control multiple UPS devices from a single application session
- Perform scheduled shutdowns and restarts

- E-mail, SMS, and network broadcast of user-defined UPS events
- Real-time graphical displays of user-defined UPS and utility conditions
- Record and save graphical event and history logs for future analysis
- Full diagnostic and event reporting, printable history, event logs and security measures
- Auto-Save files before graceful operating system shutdown
- Restart, test UPS and control receptacles
- Notification via SMS, e-mail, voice alarm, network broadcast and SNMP trap
- Real-time meters display UPS data (voltage, frequency, loading percentage, etc.)

- Monitor all UPSs at a glance within a network
- Windows 7 (32-bit/64-bit), Vista (32-bit/64-bit), Server 2008 R1 (32-bit/64-bit), Server 2008 R2 (64-bit) and Windows XP/2000/2003, Unix, Linux
- Supports the Microsoft® Windows® 2000/XP hibernation feature (Windows version only)
- Supports DMI (Desktop Management Interface) (Windows version only)
- Supports HTTP, monitor by Microsoft IE, Firefox, Opera, or Safari
- Compatible with most active Minuteman UPS products

# RPM Series Remote Power Managers

The Minuteman RPM® (Remote Power Manager) family is the ultimate power nerve center for controlling multiple network devices and services. With a single Minuteman RPM, you can individually control AC power for 2, 8, 16, or up to 128 connected devices such as servers, switches, routers, modems, and telephone systems.

## RPM Series Features

Minuteman RPMs provide a range of beneficial cost and time-saving features, including:

- Allows rebooting from any internet-enabled device via a secure connection
- Allows scheduling of tasks
- Offers password-protected security levels
- Configure and control RPM units worldwide through most standard web browsers using a single network IP address
- Accommodates RPM technology with most network and security protocols
- Manage devices from anywhere in the world

8 & 16 port models also feature: **NEW!**

- 10 foot power cord for versatile installations
- 15 & 20-amp capacities, 120 and 208VAC
- True RMS (Root Mean Square) load meter and LCD display
- 1U / 0U convertible, and 0U vertical-only models
- SNMP & DNS Support

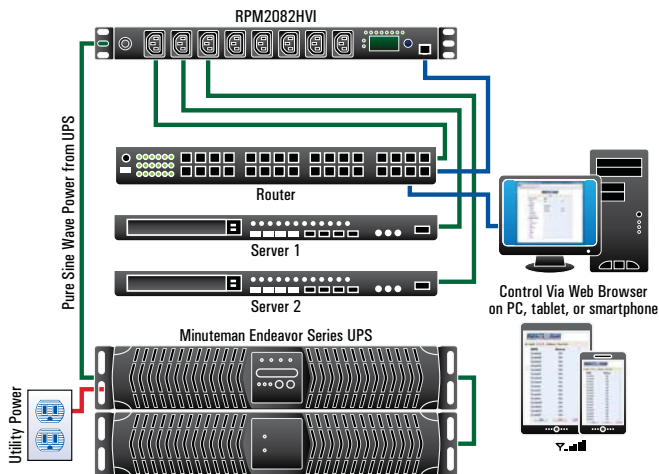


## RPM Benefits

Utilizing Minuteman's remote power manager products allows technicians and administrators to:

- **Save Time:** Reboot remote devices in seconds, not minutes or hours
- **Increase Productivity:** Eliminate help desk calls & lost time when a device locks up: RPM notifies & provides automatic reboot capabilities
- **Cut Costs:** Eliminate service calls to remote locations by managing devices from your computer or smartphone

## RPM Sample Installation



## Manage your devices from anywhere!

Easy to use interface is accessible from any internet-enabled device.



- **Reboot & Shut down** attached equipment with a simple click
- **Schedule Power Operations** for one-time, daily, weekly, monthly, yearly for specific outlets
- **Auto-ping Function** automatically notifies of locked equipment
- **Email & SMS Text** notifications of power events

Visit [minutemanups.com/rpm](http://minutemanups.com/rpm) for more information



Model	Outlets/Receptacles	Size/Features
RPM1521	2-Outlet 15-Amp	120V, NEMA 5-15 receptacles, rack mount hardware optional, surge protection
RPM1581HVN <b>NEW!</b>	8-Outlet 15-Amp	120V, NEMA 5-15 receptacles, Amp-metered, 1U horizontal/vertical rack mount
RPM20161VN <b>NEW!</b>	16-Outlet 20-Amp	120V, NEMA 5-15 receptacles, Amp-metered, 49" 0U vertical rack mount
RPM2082HVI <b>NEW!</b>	8-Outlet 20-Amp	208V, IEC320 receptacles, Amp-metered, 1U horizontal/vertical rack mount
RPM20162VI <b>NEW!</b>	16-Outlet 20-Amp	120V, IEC320 receptacles, Amp-metered, 49" 0U vertical rack mount
RPM1600 Series	8-128 Expandable, 15-amp	View full line of RPM1600 modules at <a href="http://minutemanups.com/rpm1600">minutemanups.com/rpm1600</a>
RPM2000 Series	8-128 Expandable, 20-amp	View full line of RPM2000 modules at <a href="http://minutemanups.com/rpm1600">minutemanups.com/rpm1600</a>

# MMPD Series - Power Distribution Units (PDUs)

Building on the expertise and experience of over 25 years in the power protection industry, Para Systems, Inc. developed the Minuteman Power

The MMPD Series provides a comprehensive feature set usually found only on more expensive or custom products. These include:

- **Longer power cords** - most Minuteman PDU units have 15-foot power cords
- **More outlets standard** – Minuteman PDU units are available with 8, 10, 14, 18 or 24 outlets. All but the 18 and 24-outlet PDUs have additional front and rear receptacles for ease of access
- **Configuration versatility** - Minuteman PDU units have a multi-form factor with 2U, 1U, and 0U configurations allowing for either horizontal or vertical placement. 1U products ship with a stand-off mounting bracket at no additional cost that allows for vertical installation on most racks and enclosures
- **High standards** - PDUs are compliant with higher UL 60950-1 standards. MMPD Series is compatible with any data center or network installation
- **Load-metering** – amp-metered units are available to display connected equipment loads

Distribution Unit (PDU) with our traditional high quality and exceptional value.



MMPD Series Power Distribution Units (MMPD1420HV, 20-Amp, horizontal/vertical unit shown)



Vertical mounting MMPD models (MMPD1815V48, 15-Amp, 48-inch vertical unit shown)

- **Superior protection** – Minuteman offers PDUs with surge suppression providing superior equipment protection – 2000 joules of surge protection on each unit
- **Protected investment** – All Minuteman PDUs carry a limited lifetime warranty



208V Power Distribution Units - OEPD Series (OEPD1220C13HVLT 20-Amp, horizontal/vertical unit shown)

A Power Distribution Units - MMS Series (MMPD1415HVA 15-Amp, horizontal/vertical unit shown)



Visit [minutemanups.com/pdu](http://minutemanups.com/pdu) for more information



Model	Outlets/Receptacles	Size/Features
MMPD815HV	8-Outlet 15-Amp	1U/0U Horizontal or Vertical Mounting PDU
MMPD1020HV	10-Outlet 15/20-Amp	1U/0U Horizontal or Vertical Mounting PDU
MMPD1020HVL	10-Outlet, 15/20-Amp	1U/0U Horizontal or Vertical Mounting PDU with Locking Input Plug
MMPD1415HV	14-Outlet, 15-Amp	1U/0U Horizontal or Vertical Mounting PDU
MMPD1420HV	14-Outlet, 15/20-Amp	1U/0U Horizontal or Vertical Mounting PDU
MMMPD1420HVL	14-Outlet, 15/20-Amp	1U/0U Horizontal or Vertical Mounting PDU with Locking Input Plug
MMPD81530H	8-Outlet, 15-Amp & 30-Amp	2U Horizontal Mounting PDU with locking input plug
MMPD1815V48	18-Outlet, 15-Amp	0U Vertical Mounting PDU
MMPD2415V62	24-Outlet, 15-Amp	0U Vertical Mounting PDU
MMPD2420V62	24-Outlet, 15/20-Amp	0U Vertical Mounting PDU
MMPD2420V62L	24-Outlet, 15/20-Amp	0U Vertical Mounting PDU with Locking Input Plug
MMS1015HV	10-Outlet, 15-Amp	1U/0U Horizontal or Vertical Mounting PDU with Surge Suppression
MMS1020HV	10-Outlet, 15/20-Amp	1U/0U Horizontal or Vertical Mounting PDU with Surge Suppression
MMS1020HVL	10-Outlet, 15/20-Amp	1U/0U Horiz. or Vert. Mounting PDU with Surge Suppression, Locking Input Plug
MMPD1415HVA	14-Outlet, 15-Amp	Amp-metered, 1U/0U Horizontal or Vertical Mounting PDU
MMPD2420VA62	24-Outlet, 15/20-Amp	Amp-metered, 0U Vertical Mounting PDU
MMPD2420VA62L	24-Outlet, 15/20-Amp	Amp-metered, 0U Vertical Mounting PDU with Locking Input Plug
OEPD1220C13HVLT	12-Outlet, 20-Amp	1U/0U Horizontal or Vertical Mounting 208V PDU, 8.4' Power Cord
OEPD2430V48DCLT	24-Outlet, 30-Amp	0U Vertical Mounting 208V PDU, 8.4' Power Cord

# Surge Protection Products

Minuteman offers leading-edge surge protector designs that offer protection for non-critical components at an exceptional value. Features include rotating receptacles, higher joule ratings, cable management, and compact slimline designs to ensure the ideal solution for any installation.

## MMS Series Features

- Rotating outlets to accommodate transformer blocks
- Substantial joule ratings for better protection from surges
- Lengthy power cords for added flexibility
- Phone/Fax/Network & Coax protection
- Wall-mountable
- Cord management
- Up to \$200,000 connected equipment protection
- Limited Lifetime Warranty (excl. MMS362P)

## Rotating Outlet Series



Minuteman 'R' models feature 90° or 180° rotating outlets which accommodate multiple transformer blocks, making wasted outlets a thing of the past. Select models also feature cord management provisions, allowing for organized clutter-free installation.

- Up to 3420J of surge protection
- Cord management design (excl. MMS760RCT)
- Limited Lifetime Warranty & up to \$200,000 connected equipment protection



MMS760RCT MMS780R MMS7100RT MMS7120RCT

## Slimline Series

Minuteman's newest surge suppressor line, the 'S' slimline series provides maximum protection in a sleek, attractive package. These units are designed to fit into tight spaces, and are the perfect solution for cramped media centers, desks, and wall-mounted tvs.

- Ultra-compact designs for cramped desks, media centers
- Up to 3420J of surge protection
- Child safety covers (MMS686SCT)
- Coax & phone/fax/network for total system protection
- Limited Lifetime Warranty & up to \$200,000 connected equipment protection



MMS686SCT MMS664S MMS660S

Visit [minutemanups.com/mms](http://minutemanups.com/mms) for more information



Model	Joule Rating	Outlets	Rotating	Phone/Fax	Coax	Cord Length	Protected Indicator	Warranty	Equipment Protection
MMS110	540J	1	-	-	-	-	Yes	Limited Lifetime	\$25,000
MMS130C	1080J	3	-	-	Yes	-	Yes	Limited Lifetime	\$50,000
MMS362P	241J	6	-	-	-	3 ft.	-	2 Years	-
MMS370	1080J	7	-	-	-	6 ft.	Yes	Limited Lifetime	\$50,000
MMS370T	1080J	7	-	Yes	-	6 ft.	Yes	Limited Lifetime	\$75,000
MMS570	1440J	7	-	-	-	9 ft.	-	Limited Lifetime	\$75,000
MMS760RCT	2160J	6	6	Yes	Yes	-	Yes	Limited Lifetime	\$100,000
MMS780R	2160J	8	6	-	-	7 ft.	Yes	Limited Lifetime	\$100,000
MMS7100RT	2880J	10	5	Yes	-	7 ft.	Yes	Limited Lifetime	\$150,000
MMS7120RCT	4320J	12	8	Yes	Yes	9 ft.	Yes	Limited Lifetime	\$200,000
MMS130RC	1080J	3	1	-	Yes	-	Yes	Limited Lifetime	\$75,000
MMS660S	540J	6	-	-	-	-	Yes	Limited Lifetime	\$50,000
MMS664S	1080J	6	-	-	-	4 ft.	Yes	Limited Lifetime	\$75,000
MMS686SCT	3420J	8	-	Yes	Yes	6 ft.	Yes	Limited Lifetime	\$200,000

# LineGuard™ Surge Suppressors

## Standard Series

- Minuteman's most cost-effective protection solutions
- Versatile strip and wall-tap designs fit wide range of applications
- Up to 1440J of surge protection
- Coax, phone/fax/network protection
- Ruggedized MMS570T for industrial applications
- Up to \$75,000 connected equipment protection
- Limited Lifetime Warranty (2-year on MMS562P)



MMS110 & MMS130C MMS362P 'Twin Pack'



MMS370 MMS370T MMS570

The Minuteman LineGuard Surge Suppressors are perfect for protecting security and networking devices from damaging power surges and lightning. Models are available for protecting both analog video camera lines (BNC) as well as Cat5e and Cat6 network-based IP cameras and equipment.

- **Unique design** - Small footprint mounts easily on the wall
- **High standards** - UL 497 and UL 497B ratings
- **Solid-state protection** - Provides fast response time
- **Limited Lifetime Warranty** (in U.S.A. and Canada only)
- **\$10,000 connected equipment guarantee**
- **2 LED status indicators** - Offer visual confirmation of status: ON/OFF and proper grounding
- **Wall mountable** - Units can be interlinked to maintain a single grounding connection



MMS-PTZ-BNC for analog cameras



MMS-CAT6-LAN for IP-based cameras



Analog Models	IP-Based Models
MMS-PTZ-BNC	MMS-CAT6-LAN
MMS-PTZ-UTP	MMS-CAT6-POE
MMS-PTZ-BAL	MMS-CAT5-LAN-RJ45
	MMS-CAT5-POE-RJ45

## SNMP Accessories

**SNMP Network Management Cards** from Minuteman give you the option to turn your UPS into a managed device with a dedicated IP address, allowing monitoring and control of the UPS and attached equipment via RJ45 connection and an SNMP network management platform or web browser.

### SNMP Compatible UPS Series:

- Endeavor Series 1-3kVA Rack/Tower
- PRO-RT Series Rack/Tower
- Endeavor Series 6 & 10kVA Towers
- EnterprisePlus Series Rack/Tower



#### SNMP-NV6 Card

Monitor & control UPS; compatible with SNMPv1, v2, v3, IPv4 & IPv6



#### SNMP-NET Card

Monitor & control of UPS; compatible with SNMPv1, v2, v3, IPv4 & IPv6.



#### SNMP-SSL Card

Secure monitoring & control of UPS; supports SSL, SSH, HTTPs & SNMPv3 protocols



#### Monitoring Accessories

Add the ability to monitor temp & humidity, as well as smoke, water, vibration, & door status

Additional cards & options are available. Visit [minutemanups.com/snmp](http://minutemanups.com/snmp) for more details.



Cards	Compatibility	Accessory	Description	Accessory	Description
SNMP-NV6	ED 1-3, ED 6&10, EPlus, PRO-RT	ENV PROBE	NV6, NET Monitoring		
SNMP-NET	ED 1-3, ED 6&10, EPlus, PRO-RT	SSL-EMD	SSL Monitoring	SSL-DOOR	Open/Closed Status
SNMP-SSL	ED 1-3, ED 6&10, EPlus	SSL-SMOKE	Smoke detection	SSL-VIBRATION	Vibration detection
NetAgent SNMP	CPE, MCP (legacy)	SSL-WATER	Water detection		



**Para Systems, Inc.**

1455 LeMay Drive  
Carrollton, TX 75007

800.238.7272 • 972.446.7363

[www.minutemanups.com](http://www.minutemanups.com) • [www.sizemyups.com](http://www.sizemyups.com)